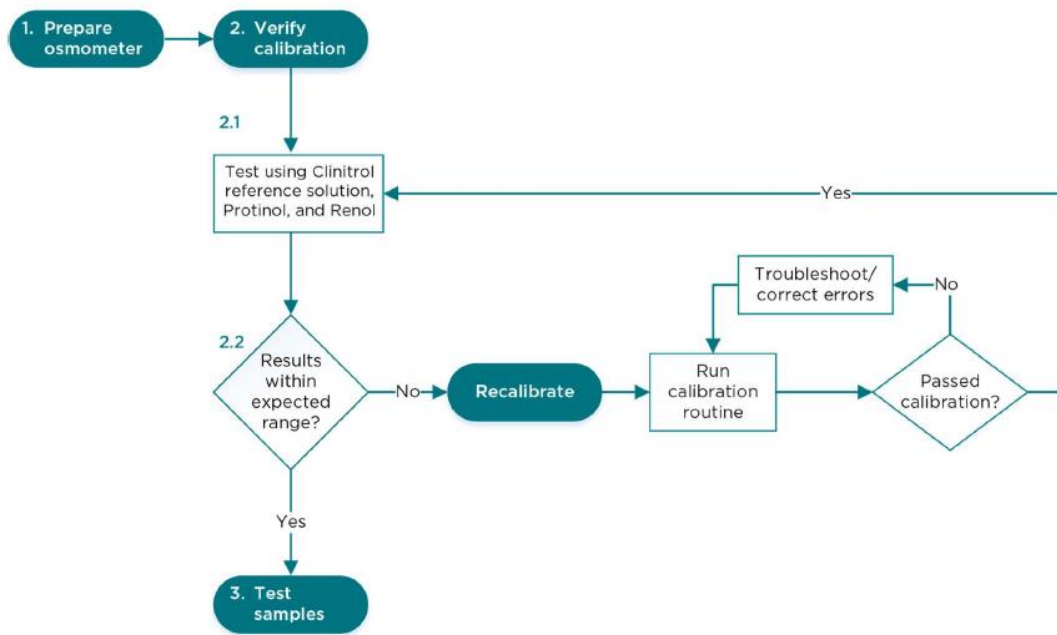


## USER GUIDE UPDATE NOTIFICATION

**Date:** October 2020  
**Subject:** Osmometer User Guide Update  
**Instruments Affected:** All Clinical Osmometer Models

### Overview:

There has been an update to your osmometer user guide. Advanced Instruments has issued an addendum to your user guide to clarify the manufacturer-recommendation for daily osmometer QC. Advanced Instruments recommends running Protinol™ Protein-Based Controls, Renol™ Urine Osmolality Controls and Clinitrol™ 290 Reference Solution daily prior to testing patient specimens per the diagram below.



The user guide addendum (CL00180), along with previously issued service alerts, is available at <https://www.aicompanies.com/support/product-service-alerts/>. Additionally, the latest version of your osmometer user guide is accessible via serial number at <https://www.aicompanies.com/support/user-guides/>.

### Recommended Actions:

- Print and incorporate the user guide addendum into your osmometer user guide.
- Update your SOP to include Protinol Protein-Based Controls, Renol Urine Osmolality Controls and Clinitrol 290 Reference Solution as outlined in the user guide addendum.
- Share this communication with your laboratory and with laboratories in your network impacted by this notification.

Advanced Instruments is committed to the quality and accuracy of osmolality test results. If you have any questions regarding this communication, please email [quality@aicompanies.com](mailto:quality@aicompanies.com).

Sincerely,

*Mark Boyle* | Advanced Instruments, LLC  
 Director, Quality Assurance & Regulatory Affairs